

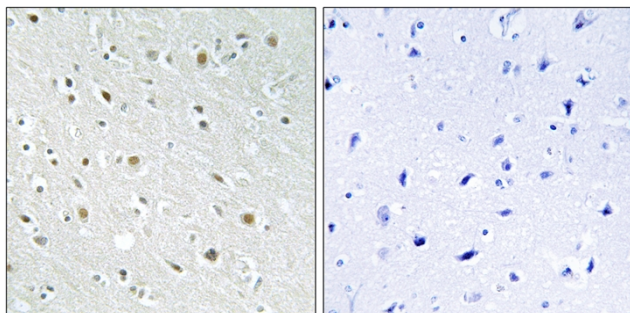


SSBP2 Polyclonal Antibody

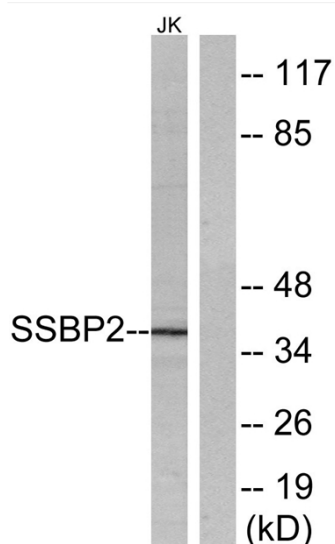
Catalog No	YP-Ab-02050
Isotype	IgG
Reactivity	Human;Mouse
Applications	WB;IHC;IF;ELISA
Gene Name	SSBP2
Protein Name	Single-stranded DNA-binding protein 2
Immunogen	The antiserum was produced against synthesized peptide derived from human SSBP2. AA range:10-59
Specificity	SSBP2 Polyclonal Antibody detects endogenous levels of SSBP2 protein.
Formulation	Liquid in PBS containing 50% glycerol, 0.5% BSA and 0.02% sodium azide.
Source	Polyclonal, Rabbit,IgG
Purification	The antibody was affinity-purified from rabbit antiserum by affinity-chromatography using epitope-specific immunogen.
Dilution	WB: 1/500 - 1/2000. IHC: 1/100 - 1/300. ELISA: 1/10000.. IF 1:50-200
Concentration	1 mg/ml
Purity	≥90%
Storage Stability	-20°C/1 year
Synonyms	SSBP2; SSDP2; Single-stranded DNA-binding protein 2; Sequence-specific single-stranded-DNA-binding protein 2
Observed Band	38kD
Cell Pathway	Nucleus .
Tissue Specificity	Ubiquitous.
Function	similarity:Contains 1 LisH domain.,tissue specificity:Ubiquitous.,
Background	This gene encodes a subunit of a protein complex that interacts with single-stranded DNA and is involved in the DNA damage response and maintenance of genome stability. The encoded protein may also play a role in telomere repair. A variant of this gene may be associated with survival in human glioblastoma patients. [provided by RefSeq, Sep 2016],
matters needing attention	Avoid repeated freezing and thawing!
Usage suggestions	This product can be used in immunological reaction related experiments. For more information, please consult technical personnel.



Products Images



Immunohistochemistry analysis of paraffin-embedded human brain tissue, using SSBP2 Antibody. The picture on the right is blocked with the synthesized peptide.



Western blot analysis of lysates from Jurkat cells, using SSBP2 Antibody. The lane on the right is blocked with the synthesized peptide.